

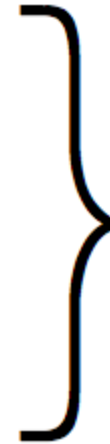
Technology for Programme Monitoring in the Future

Our Vision

common forms

common indicators

common places (things)



common data /
knowledge

Shared data enables cross-organization collaboration and coordinated responses

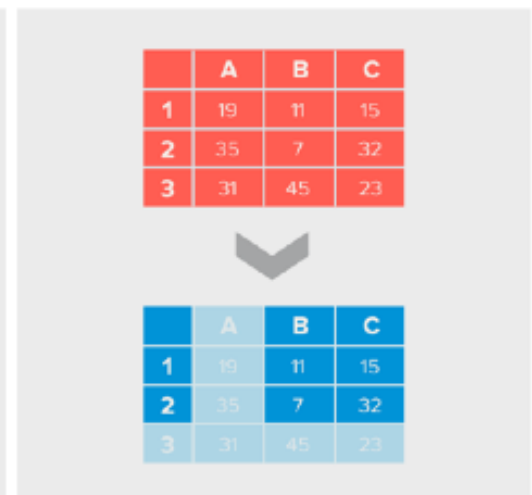
Platform built from the ground up to enable secure sharing of real-time data with user permissions and data filters.



Partners collaborate on a response.



Each partner is assigned permissions to access the data...



..including filtered data so partners see only what they need.

Combined datasets provide contextual insight

Multiple datasets analyzed and visualized together, as data is received from the field, provides complete information for better decisions.



Food supplies at a school are okay

WFP FOOD SUPPLY DATA

BUT



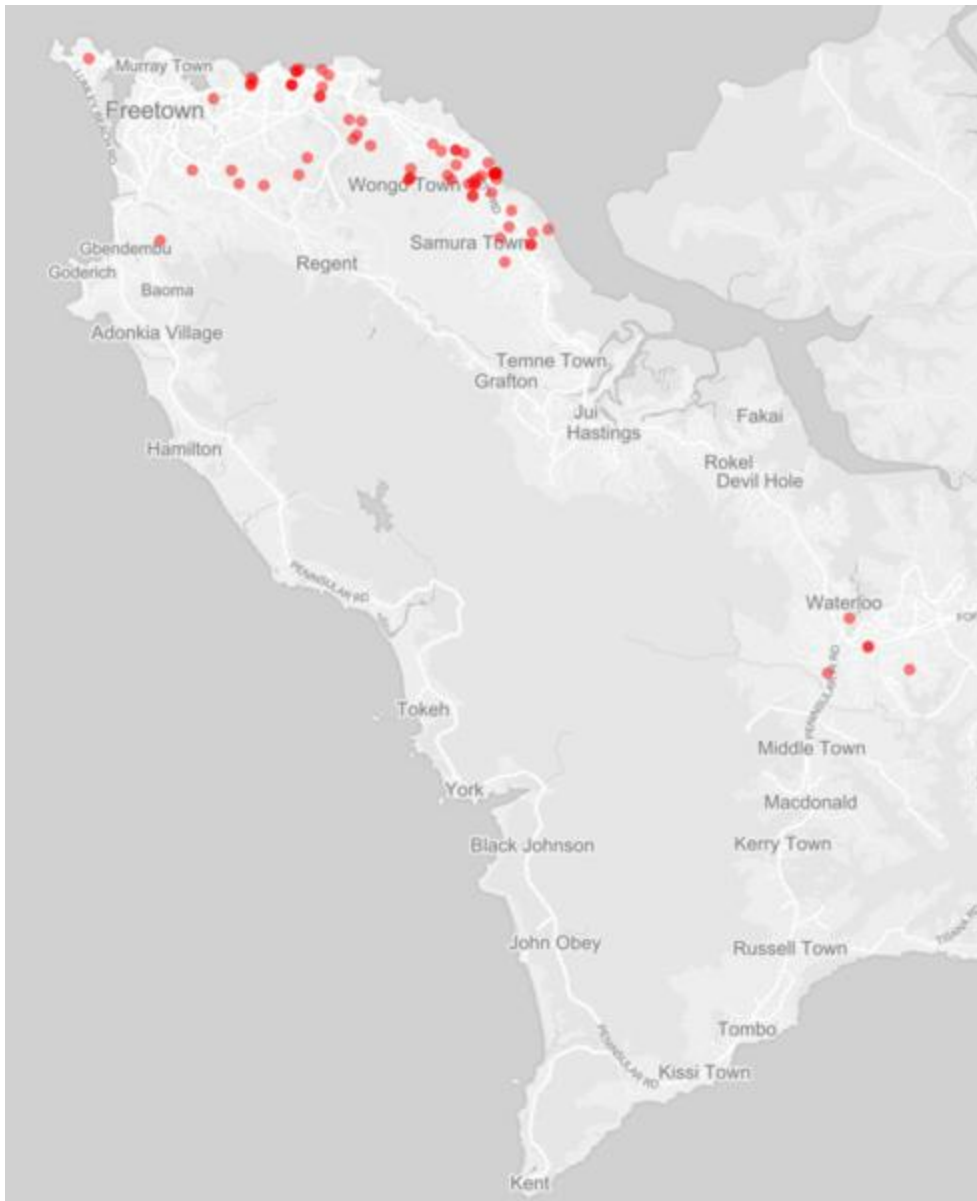
Malnutrition cases at nearby health clinic spike

UNICEF MALNUTRITION CASE DATA



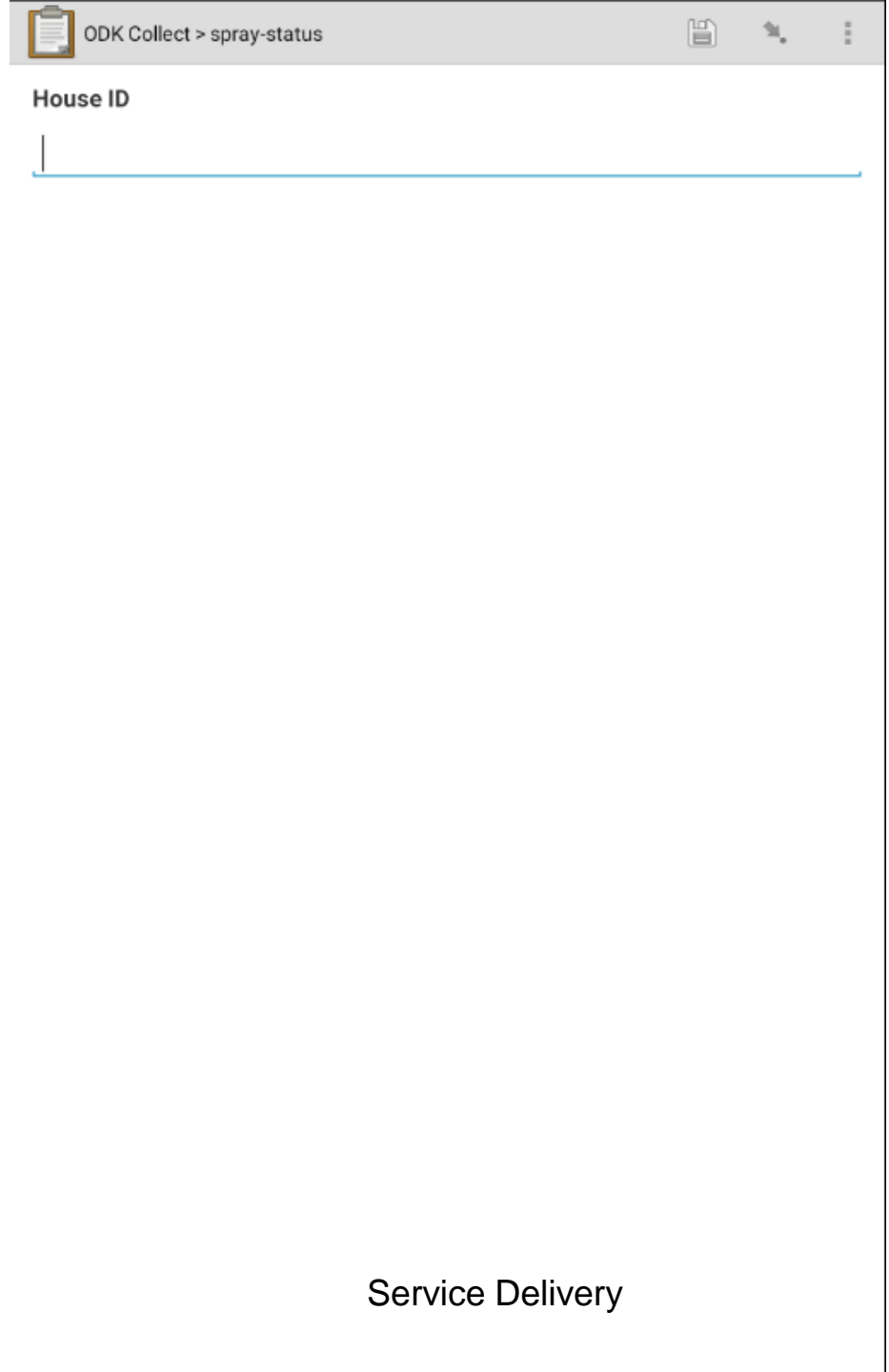
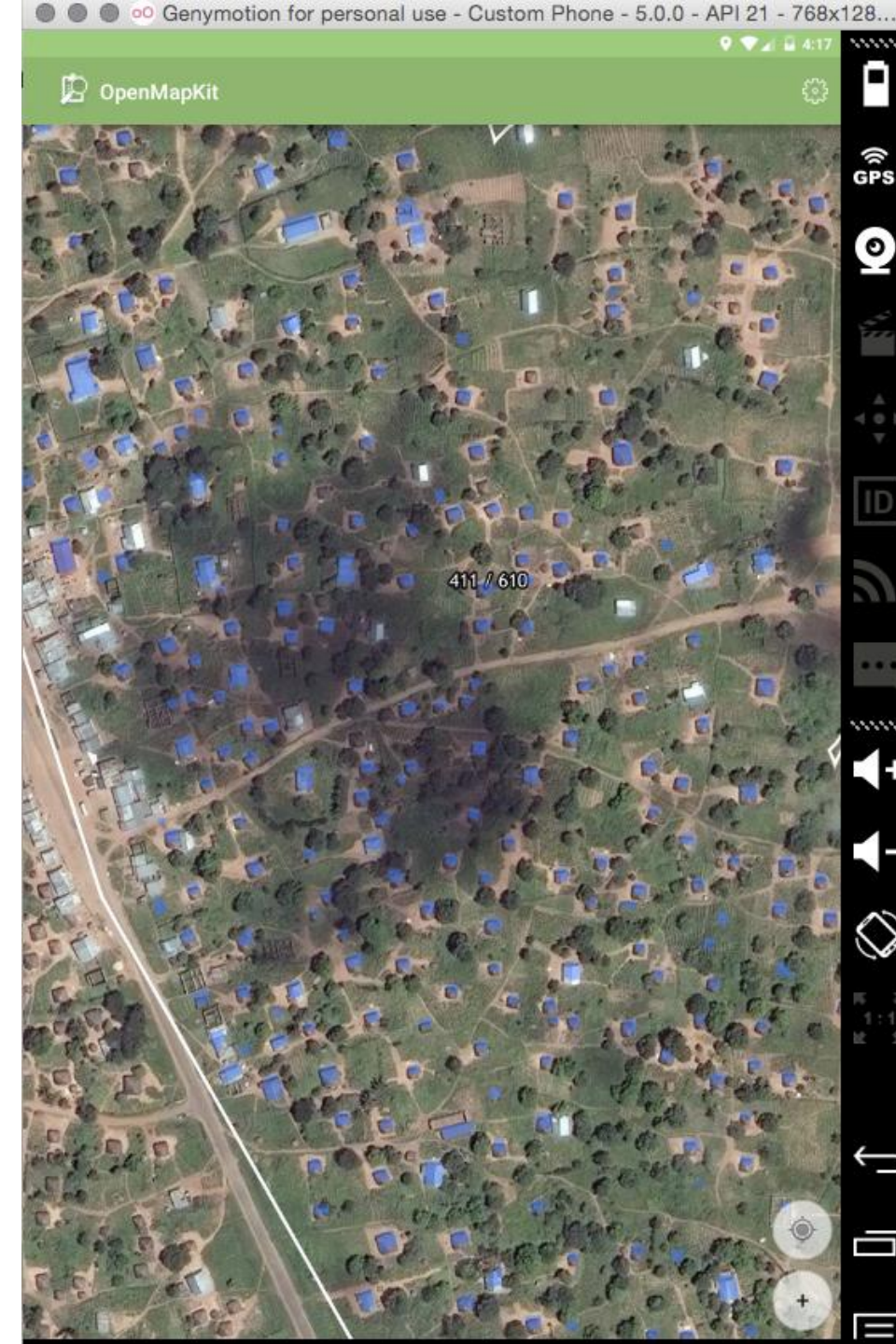
The school is in a food-insecure area

CONCERN FOOD SECURITY DATA



Freetown, Sierra Leone



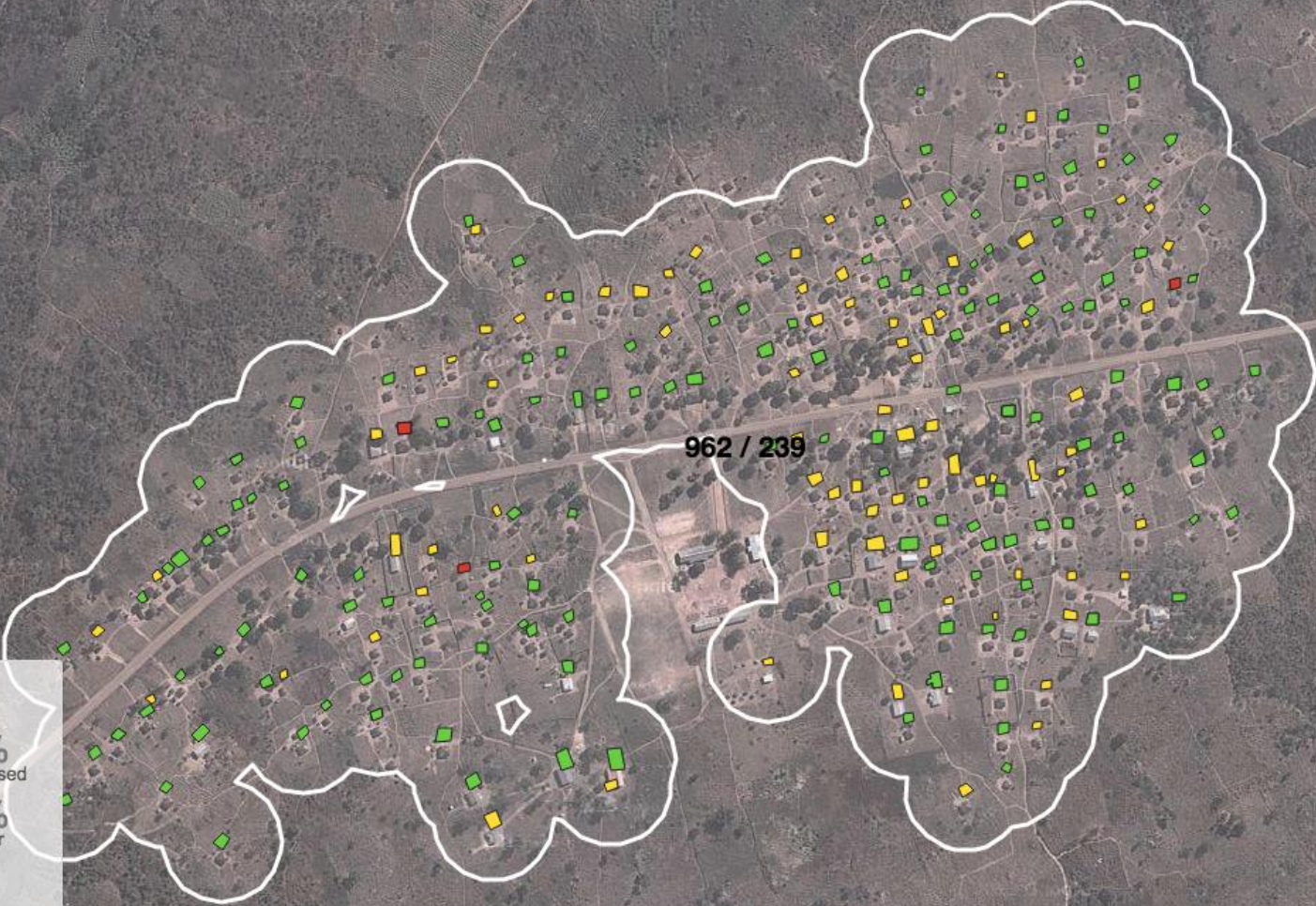


Service Delivery

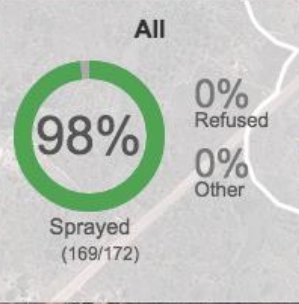
+

-

📍



962 / 239



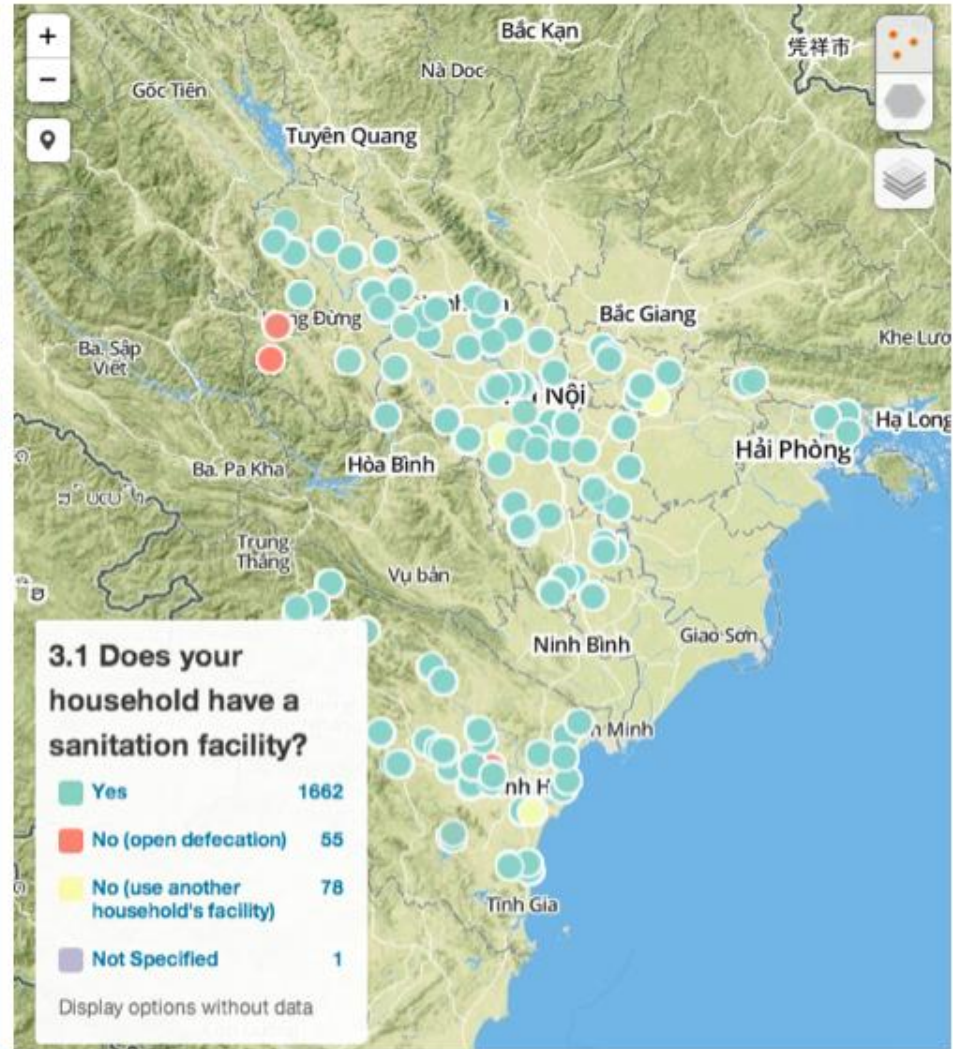
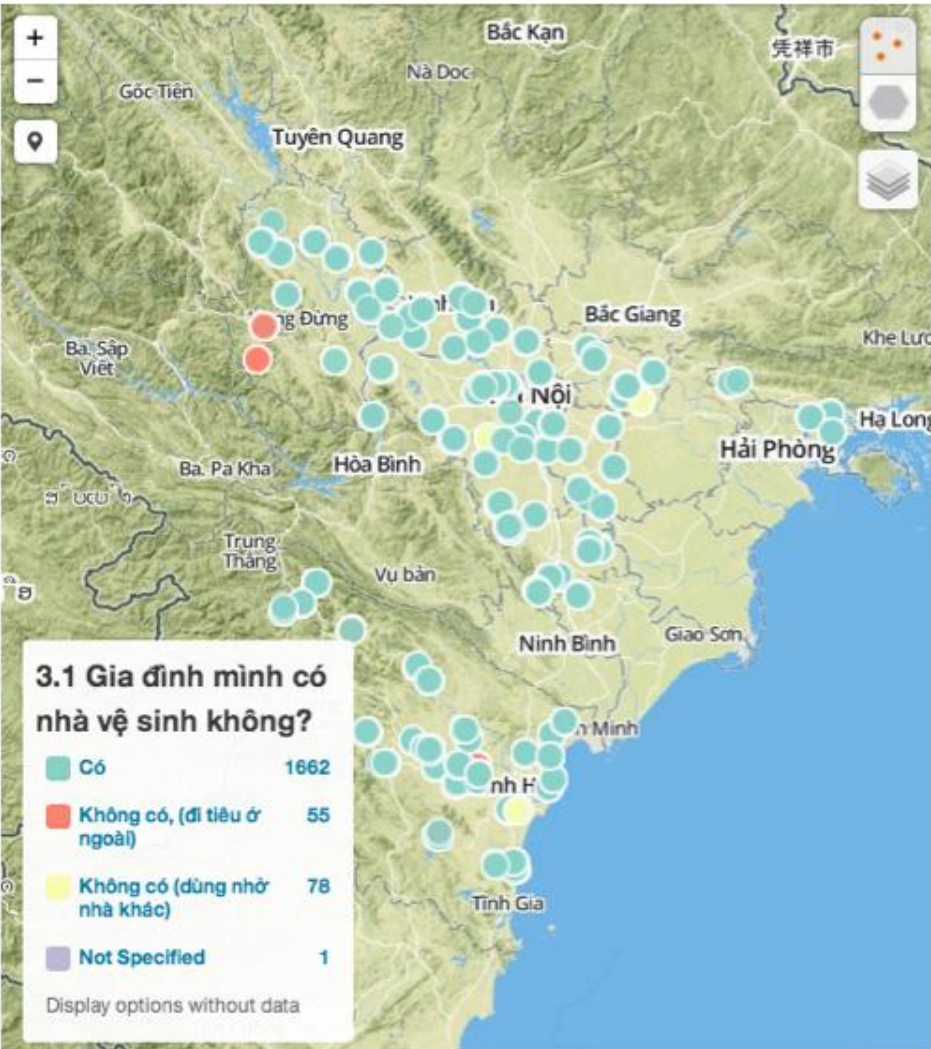
Design Forms - XLS Form

	A	B	C	D	E	F
1	type	name	label	required	constraint	relevant
2	text	name	What's your name?	yes		
3	integer	age	How old are you?	yes	`\${age} > 0 and `\${age}	
4	select_one gender	gender	Gender			
5	photo	photo	Take a picture			
6	date	date	Date			
7	geopoint	location	Where are you?			
8	select_one yes_no	pizza_fan	Do you like pizza?			
9	note	pizza_hater	That's weird!			`\${pizza_fan} = 'no'
10	select_one pizza_types	pizza_type	Best pie?			`\${pizza_fan} = 'yes'
11	select_multiple pizza_toppings	favorite_toppings	Favorite toppings			`\${pizza_fan} = 'yes'
12	note	thanks	Thanks for your time `\${name}!			
13						
14	start	start_time				
15	end	end_time				
16	today	today				
17	imei	imei				
18	phonenumber	phonenumber				
19						

Learn XLS Forms at www.xlsform.org

Supports Multiple Languages

A	B	C	D
type	name	label::English	label::Vietnamese
select_one yes_no	condition_structure	3.9 IS THE SLAB OR TOP OF CONTAINMENT STRUCTURE PRESENT AND IN GOOD CONDITION?	3.9 CÓ NẮP BỆ XÍ (TẤM ĐẠN) Ở TÌNH TRẠNG CÒN TỐT KHÔNG?
select_one yes_no	structure_sealed	3.10 ARE ALL HOLES AND ACCESS OPENINGS OF THE CONTAINMENT STRUCTURE SEALED? (EITHER WITH A LID, PLUG, OR WATER SEAL)	3.10 CÁC LỖ VÀ CỬA LẤY PHÂN CỦA BỂ CHỨA PHÂN CÓ ĐƯỢC BỊT KÍN KHÔNG? (BỊT BẰNG NẮP, NÚT HOẶC BẰNG NÚT NƯỚC)
select_one yes_no	structure_leaks	3.11 ARE THERE ANY LEAKS OR SLUDGE OVERFLOWING THE SUPERSTRUCTURE / CONTAINMENT STRUCTURE OR IS SOIL NEAR THE SEPTIC TANK SATURATED WITH SEPTAGE?	3.11 NƯỚC HOẶC BÙN CÓ BỊ TRÀN RA PHẦN TRÊN/BỂ CHỨA PHÂN, HOẶC ĐẤT Ở GẦN BỂ PHỐT BỊ THẤM KHÔNG?
select_one effluent_drainage	effluent_drainage	3.12 WHERE DOES THE EFFLUENT FROM THE SEPTIC TANK OR BIOGAS DIGESTER GO?	3.12 NƯỚC THẢI TỪ BỂ TỰ HOẠI HOẶC BỂ BIOGAS CHẢY ĐI ĐÂU?
select_one distance	drinkingwater_distance	3.13 HOW FAR IS THE HOUSEHOLD'S MAIN SOURCE OF DRINKING WATER FROM THE CONTAINMENT STRUCTURE AND SOAKAWAY?	3.13 NGUỒN NƯỚC ĂN UỐNG CHÍNH CỦA HỘ GIA ĐÌNH CÁCH BỂ CHỨA PHÂN VÀ HỐ THẤM BAO XA?
select_one frequency	empty_frequency	3.14 How often do you empty the pit?	3.14 Bao lâu ông/bà lấy phân ra?
select_one yes_no_dont	latrine_flooding	3.15 Does the latrine usually flood due to heavy rains?	3.15 Nhà tiêu có thường bị ngập khi mưa lớn không?
begin group	latrine_install_date	Latrine Installation Date	Ngày xây khu vệ sinh
integer	install_date	3.16 In which year was the latrine / toilet installed?	3.16 Nhà vệ sinh được xây dựng từ năm nào?



View data in multiple languages